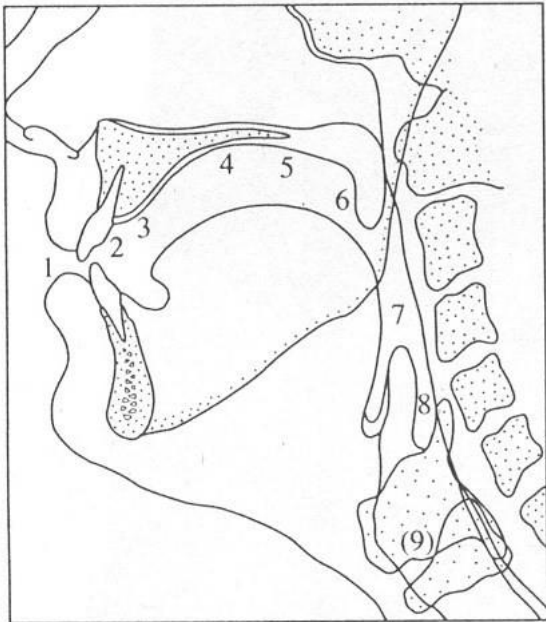
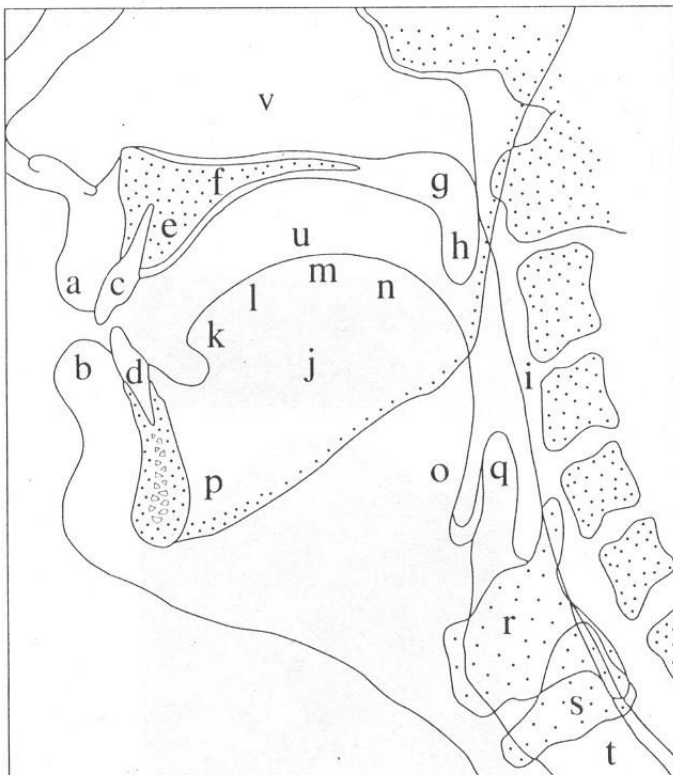


1- Identifier les différents lieux d'articulation

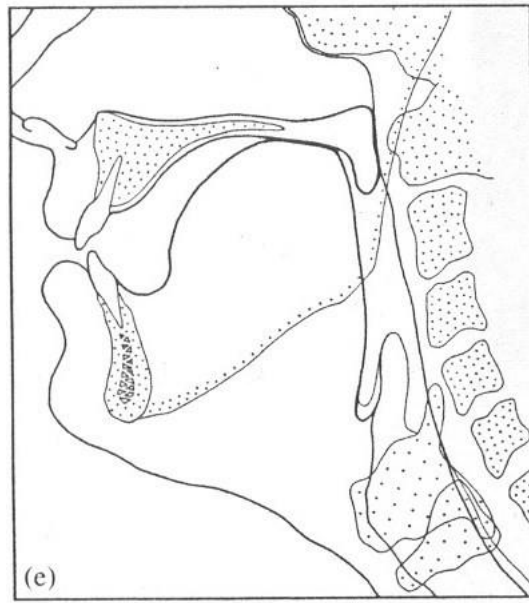
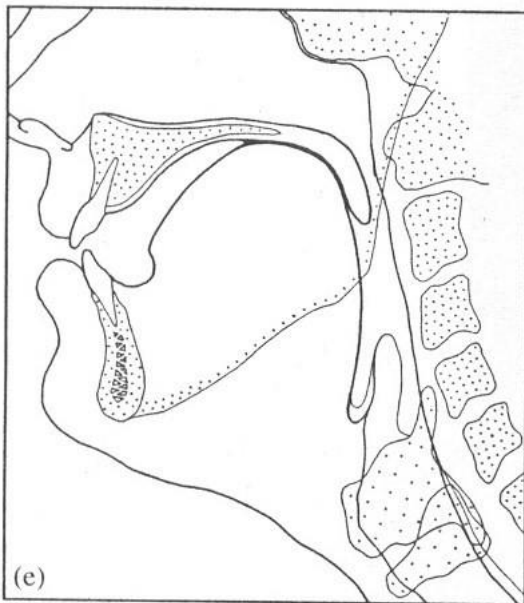


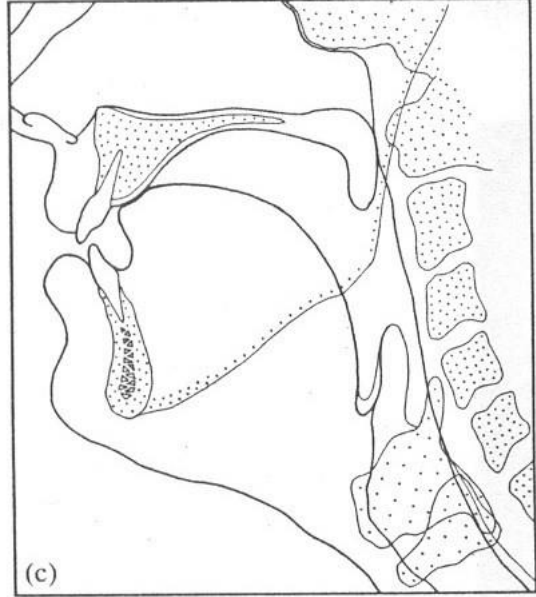
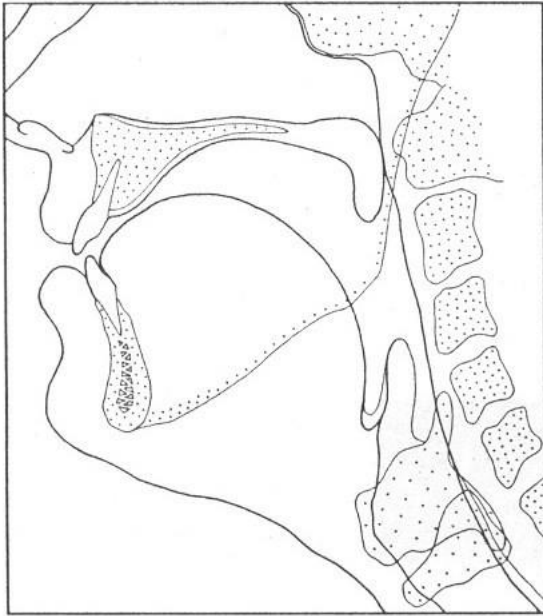
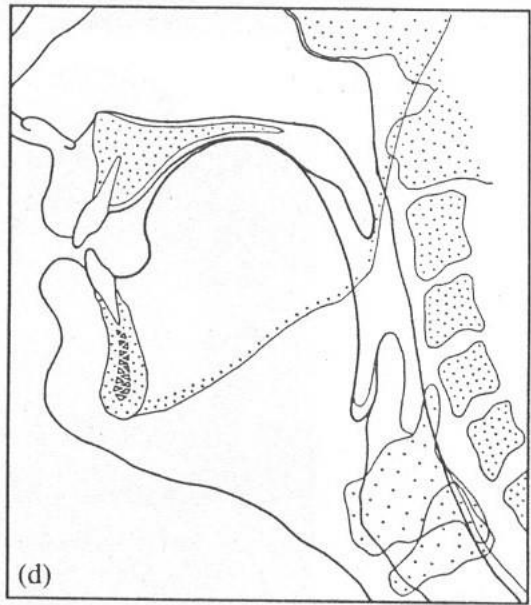
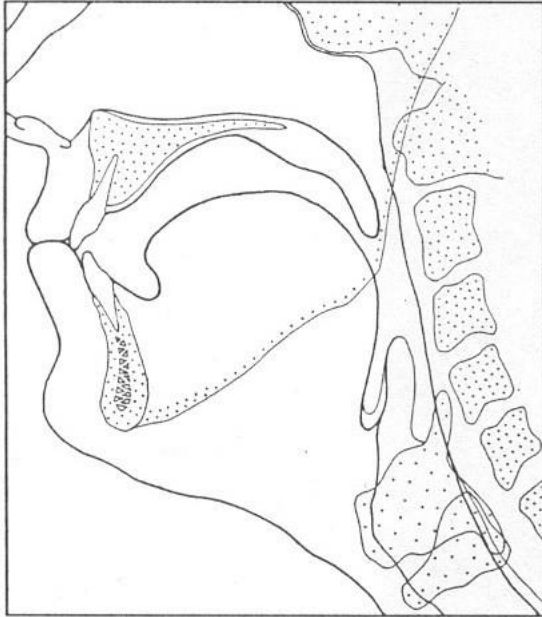
2- Identifier les différents organes du conduit vocal

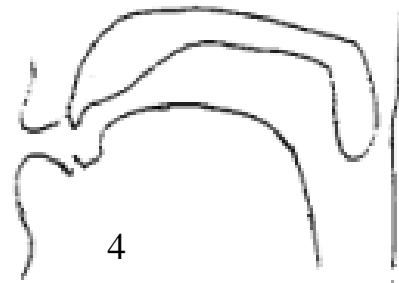
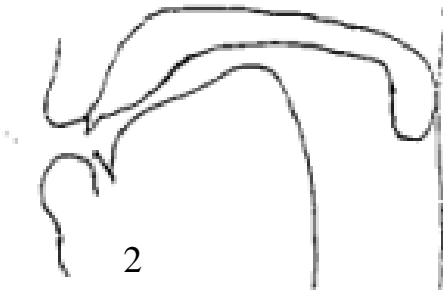
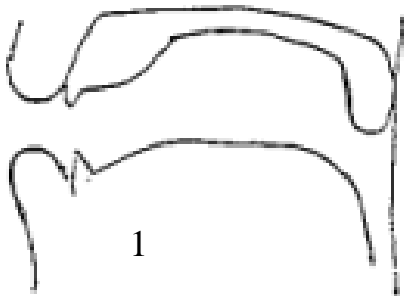
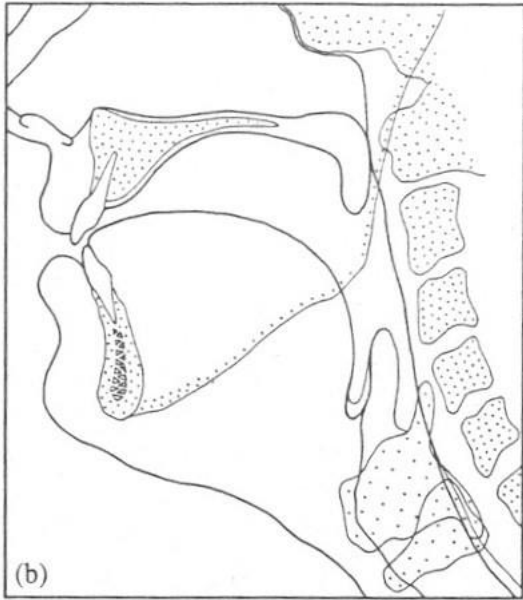


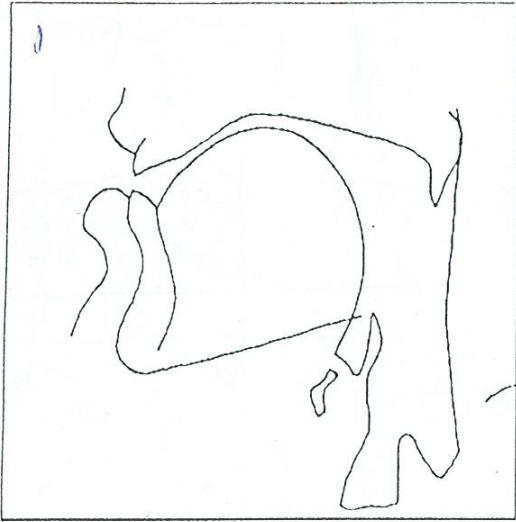
3- À l'aide des six critères articulatoires, identifier les phonèmes suivants.

Critère	N° 1	N° 2	N° 3	N° 4, etc.
1-				
2-				
3-				
4-				
5-				
6-				
Son=	[]	[]	[]	[]

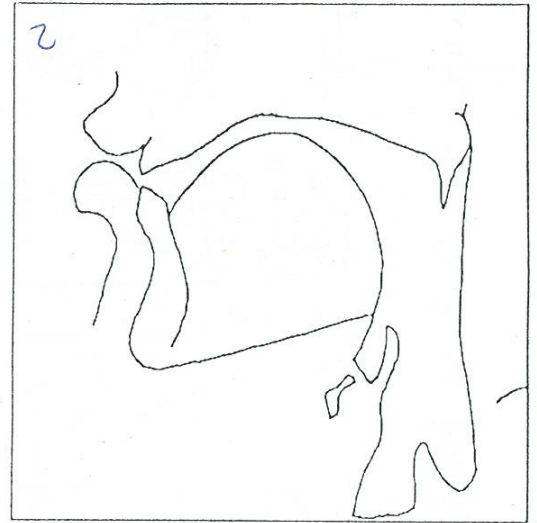




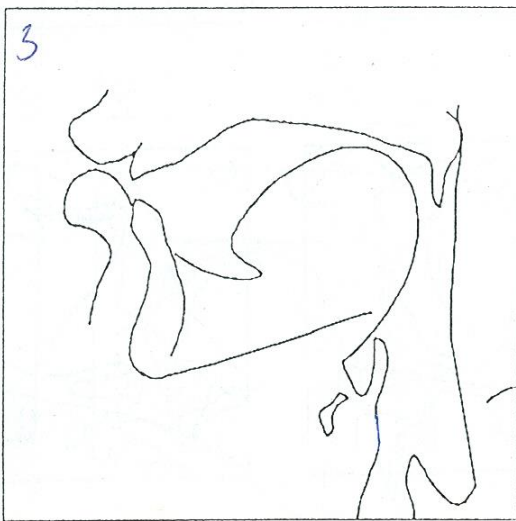




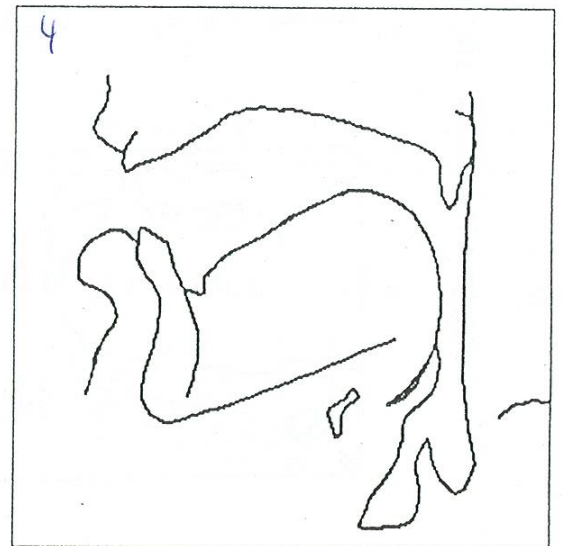
[i]



[e]



[ɛ]



[œ]

Les sagittales du conduit vocal au cours de la production de voyelles

VOYELLES

1)



2)



3)



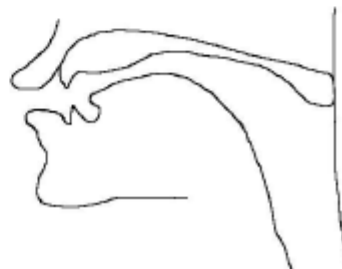
4)



5)



6)



CONSONNES

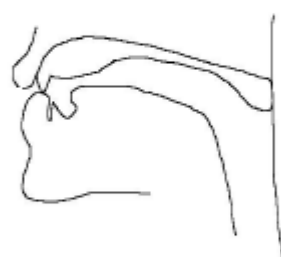
7)



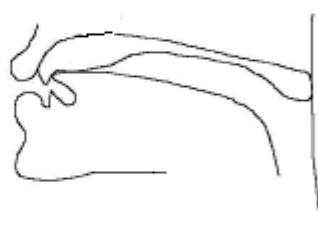
8)



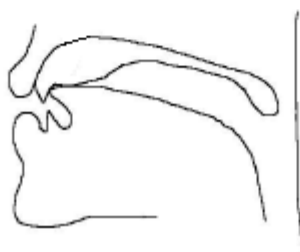
9)



10)



11)



12)

